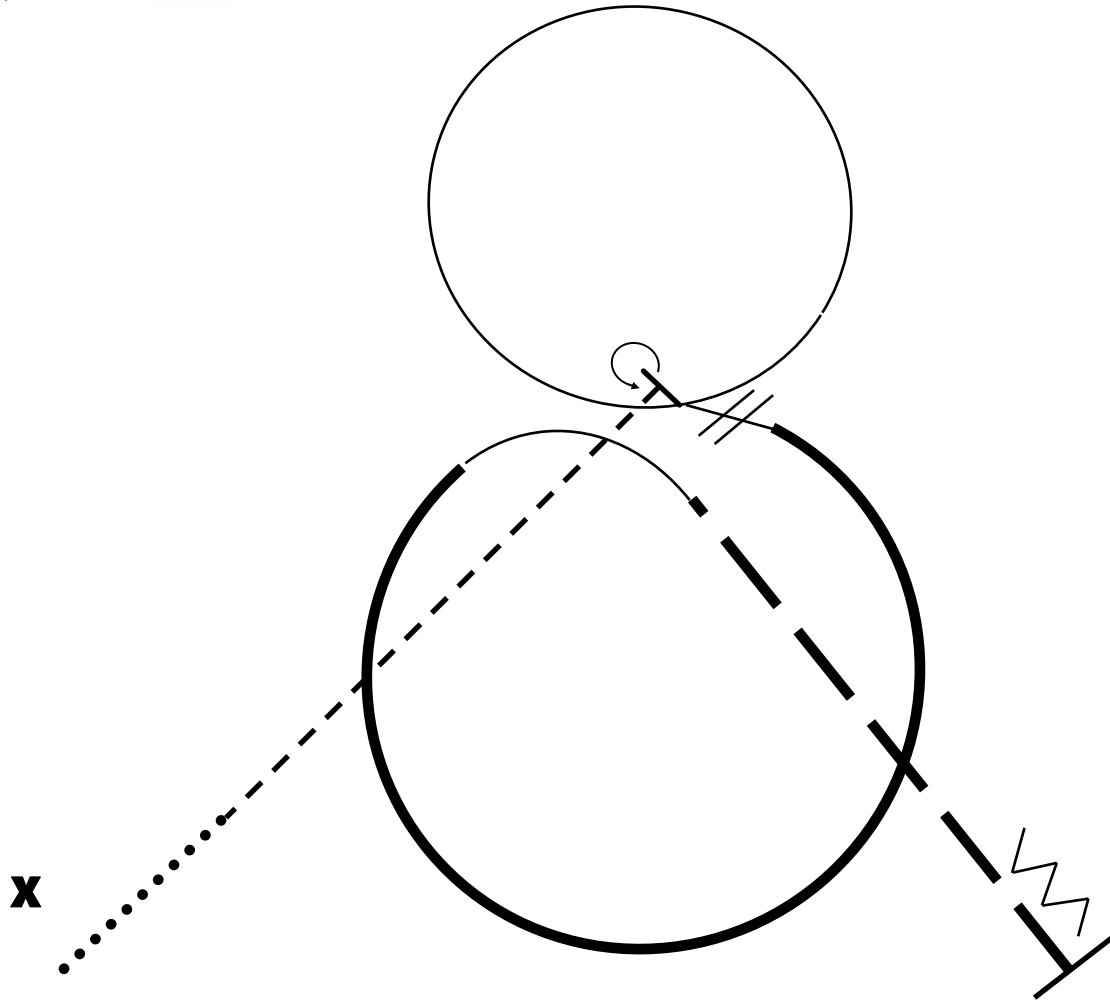




# Advanced/Open Y



1. Walk 2 horse lengths from marker
  2. Jog to center
  3. Stop, perform a 270 turn left
  4. Lope left lead circle
  5. Simple change through jog
  6. Extend the lope through a right lead circle but don't close it
  7. Collect lope then extend trot
  8. Stop and back
- Return to lineup at walk or jog

Walk	.....
Jog	- - - - -
Extended Jog	— — —
Lope	—————
Extended Lope	—————
Halt	—
Cone	<b>X</b>
Back Up	∨∨∨